



# Nintendo Switch Battery Replacement

A free guide showing how to replace the Li-ion battery in a Nintendo Switch gaming console.

Written By: Blake Klein



## INTRODUCTION

Follow this guide to replace the battery in a Nintendo Switch gaming console.

The battery is heavily glued in and will require adhesive remover to make replacement possible.

**Before disassembling your device, discharge the battery below 25%. The battery can catch fire and/or explode if accidentally punctured, but the chances of that happening are much lower if discharged.**

If your battery is swollen, do not heat your Switch. Use a dropper, or syringe, to inject isopropyl alcohol (90+%) underneath the battery to weaken the adhesive. Swollen batteries can be dangerous, so wear eye protection and exercise due caution if attempting removal yourself. Take it to a professional if you're not sure how to proceed.



### TOOLS:

- [Phillips #000 Screwdriver](#) (1)
  - [Tri-point Y00 Screwdriver](#) (1)
  - [Spudger](#) (1)
  - [iFixit Adhesive Remover \(for Battery, Screen, and Glass Adhesive\)](#) (1)  
*Recommended*
  - [Isopropyl Alcohol](#) (1)
  - [K5-PRO Viscous Thermal Paste](#) (1)
  - [Coffee Filters or a lint-free cloth](#) (1)
  - [Tesa 61395 Tape](#) (1)
- Precut Adhesive Card



### PARTS:

- [Nintendo Switch Replacement Battery](#) (1)

## Step 1 — Rear Panel



- Remove the four 6.3 mm Tri-point Y00 screws from the rear panel.

## Step 2



- Remove the single 6.1 mm Phillips #000 screw from underneath the kickstand.

### Step 3



- Remove the two 2.7 mm Phillips #000 screws from the bottom of the device.

### Step 4



- Remove the single 2.7 mm Phillips #000 screw from the top of the device.

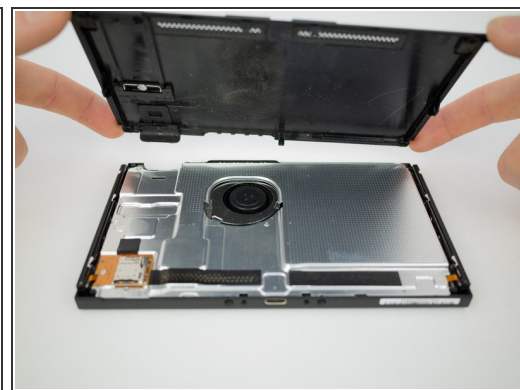
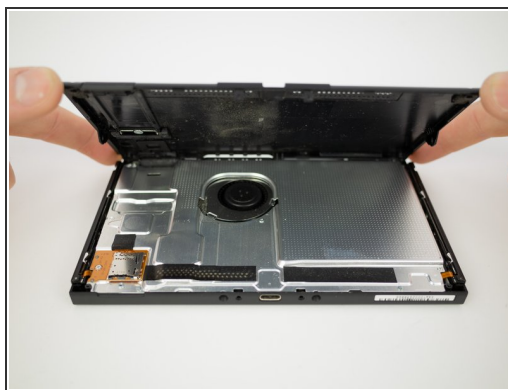


## Step 5



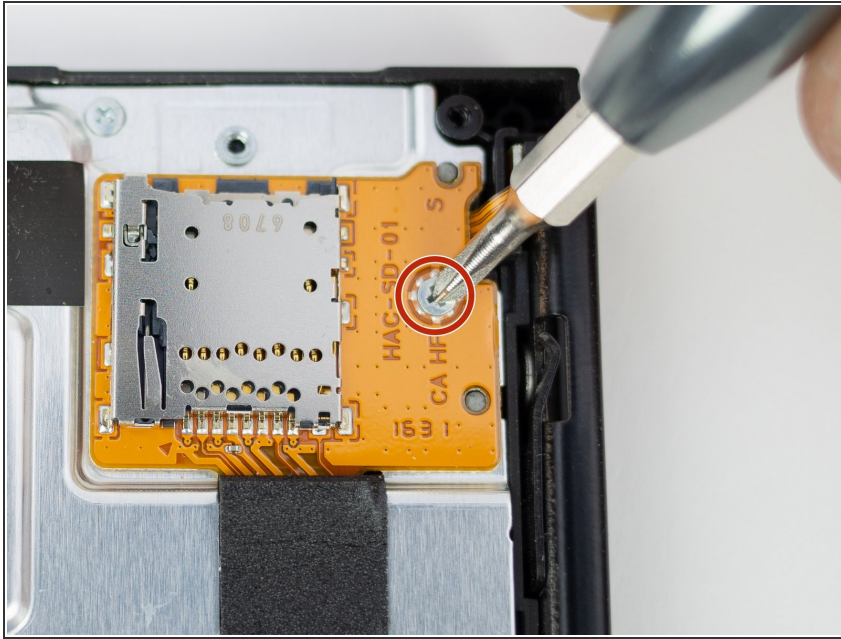
- Remove the single 3.8 mm Phillips #000 screw from the right Joy-Con rail.
- Remove the single 3.8 mm Phillips #000 screw from the left Joy-Con rail.

## Step 6



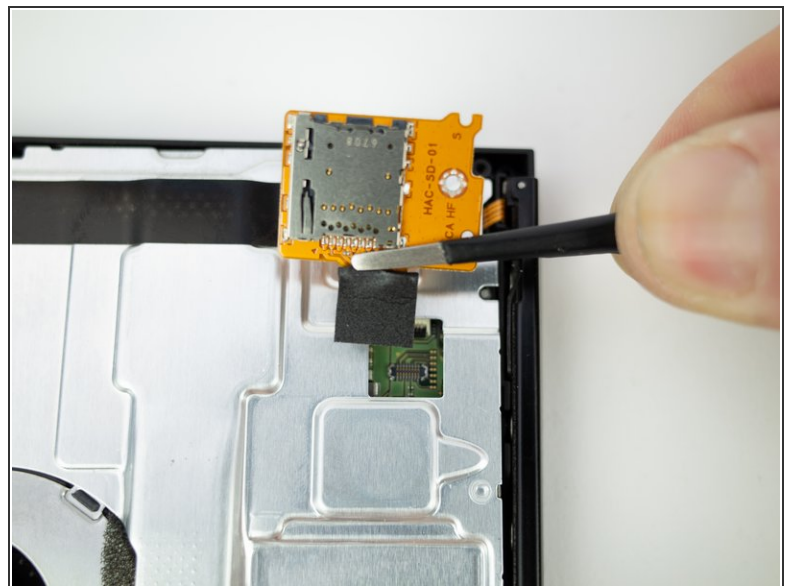
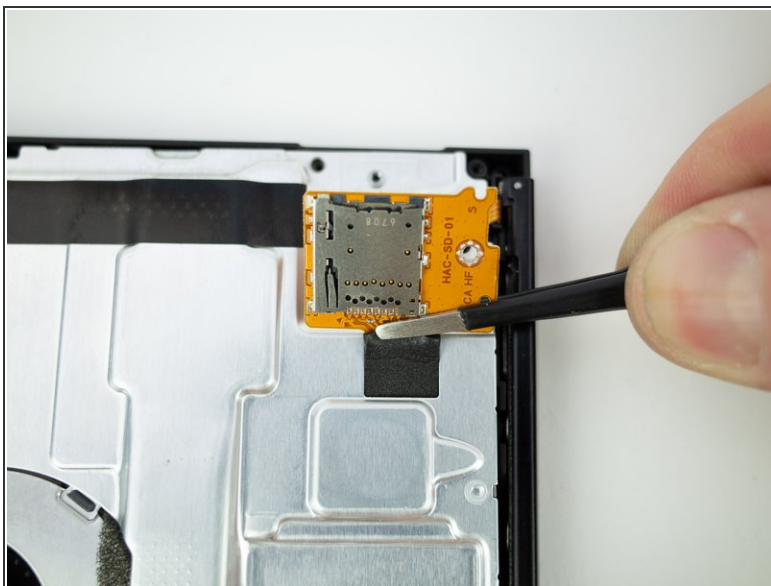
- Pull the rear panel up and off of the device.

## Step 7 — Micro SD Card Reader



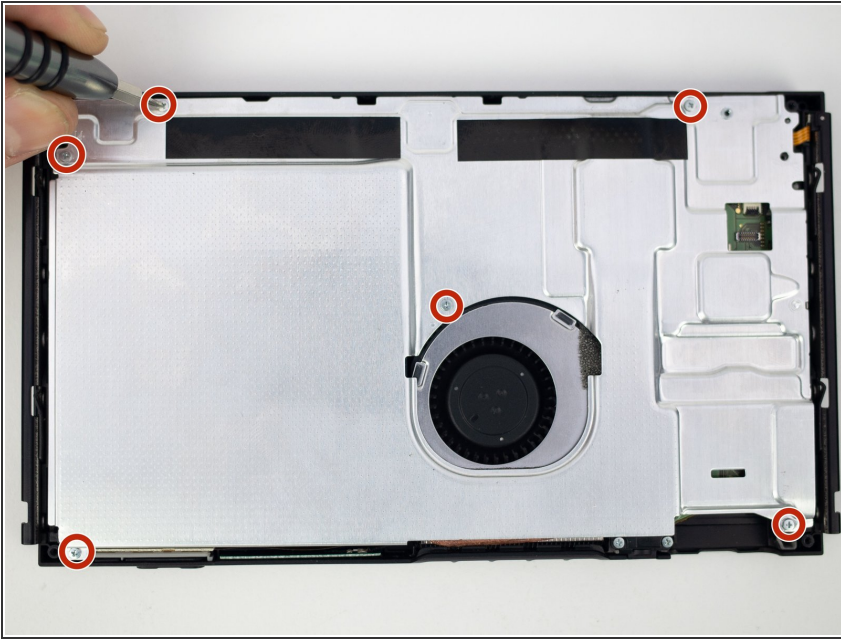
- Remove the single 3.1 mm Phillips screw from micro SD card board.

## Step 8



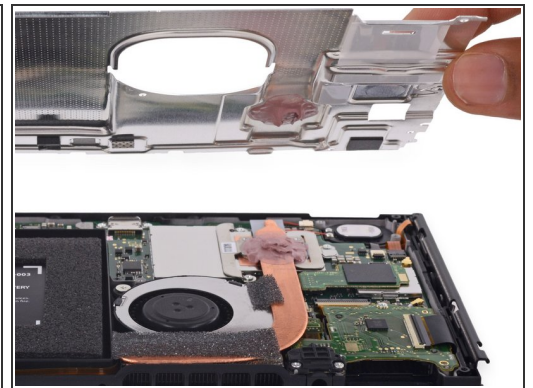
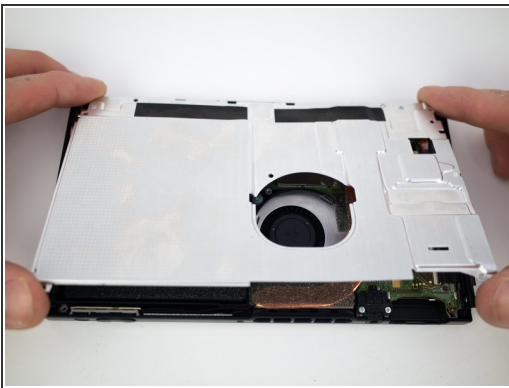
- Gently lift the micro SD card board straight up, away from the Switch to disconnect and remove it.
- ☑ During reassembly, line up the micro SD card board and lightly press on the foam pad until the press connector snaps into place to reconnect it.

## Step 9 — Shield Plate



- Remove the six 3.1mm Phillips #000 screws from the shield plate.

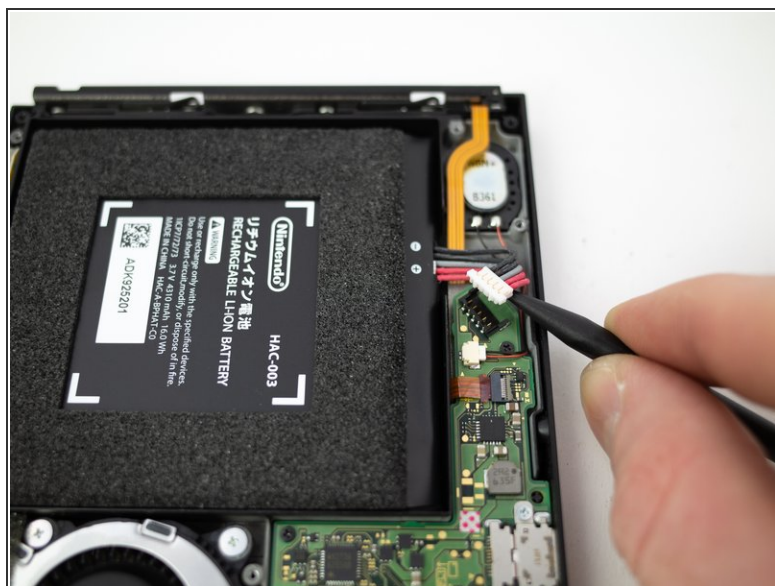
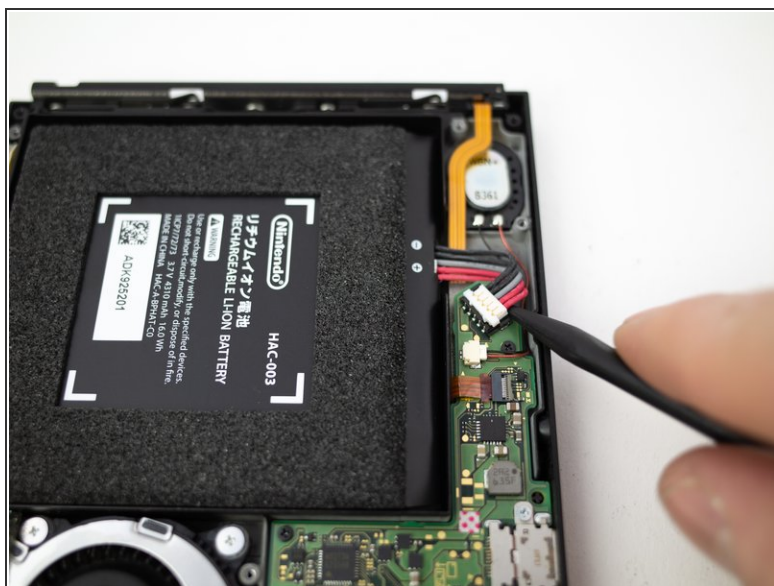
## Step 10



- Remove the shield plate from the device.
- ★ A thick pink thermal compound bridges the gap between the shield plate and the copper heat sink underneath. For best results, whenever the shield plate is removed, refer to our [thermal paste guide](#) to remove the old thermal compound and replace it with an appropriate, thick compound such as [K5 Pro](#) during reassembly.



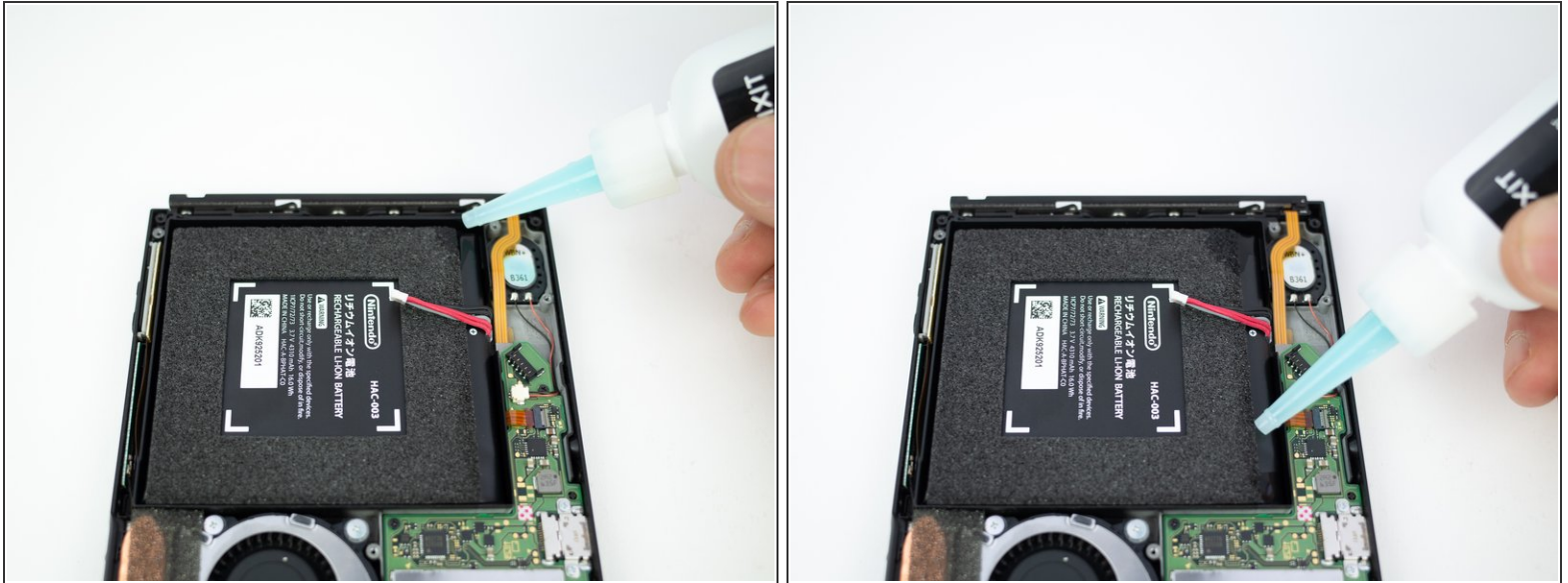
## Step 11 — Battery



- Insert the pointed end of a spudger underneath the white connector and pry upwards to disconnect the battery from the motherboard.



## Step 12



- i** The Nintendo Switch battery is glued in place. For best results, we recommend applying some high-concentration (90% or greater) isopropyl alcohol or our [Adhesive Remover](#) as shown in this step before attempting to remove the battery.
- Apply a small amount of adhesive remover or isopropyl alcohol (approximately 1 ml) evenly along one edge of the battery cell.
  - Tilt the switch so the liquid solvent spreads underneath the battery.
  - Wait 2-3 minutes for the solvent to break down the adhesive underneath the battery before you proceed to the next step.

## Step 13



- Use a pry tool to lever the battery out.

⚠ Don't use excessive force. A damaged lithium-ion battery can leak toxic chemicals and/or catch fire. If the battery doesn't lever out fairly easily, apply a little more solvent and try again.

## Step 14



- Remove the battery from the Switch console.

⚠ Don't re-use the battery once it's removed.

- ☑ Use strips of [double-sided adhesive tape](#) to secure the new battery.

To reassemble your device, follow these instructions in reverse order.